

Rev	Description	By	Date
L1	ISSUED FOR LEGISLATION		08/05/25

CAR PARK GENERAL ARRANGEMENT

TITLE BOUNDARY
CAR PARK ENVELOPE

CAR PARK DEPARTMENT

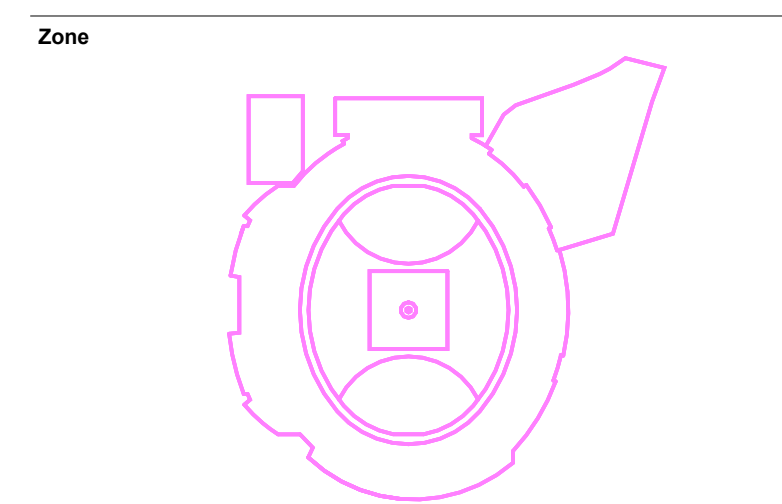
STADIUM ENVELOPE
QUEUEING ZONE
DIS ZONE
BIKE PARKING / STORAGE ZONE
ELECTRIC VEHICLE CHARGING ZONE
CONTROL ROOM ZONE
PUBLIC CORE (FIRE STAIR)
PRIVATE CORE (SINGLE LIFT & STAIR)
COACHES & PLAYERS ACCESS
CAR PARK LINE/PEDESTRIAN MARKING
ANTARCTIC FACILITIES
EXHAUST RISER (EXTENDS 3M ABOVE GROUND)
AIR INTAKE RISER (TERMINATES AT GROUND)
ACTIVE BUILDING EDGES

PARKING SCHEDULE

Level	Count
BASEMENT 1	161
BASEMENT 2	213
Grand total	374



sbp
schlaich
bergmann partner
Scale



Client
MACQUARIE POINT
DEVELOPMENT CORPORATION

Project No.
322070.00

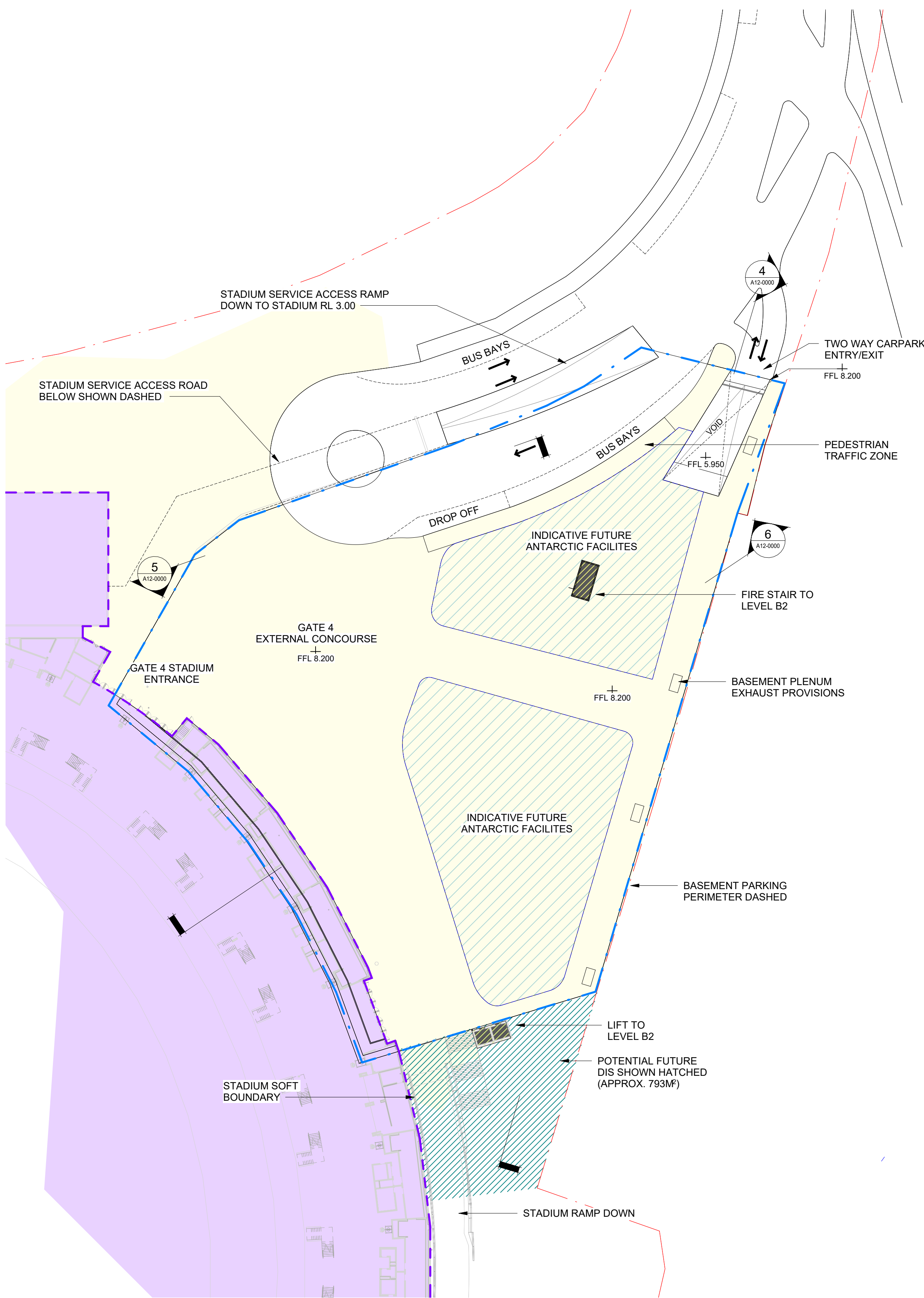
Project
MACQUARIE POINT
CAR PARK VARIATION
41 Evans St, Hobart TAS 7000

Acknowledgement
The Stadium Team acknowledge the traditional owners of this land, the
Maingardi people, and pay respect to those that have passed before us.
We acknowledge today's Tasmanian Aboriginal people, the Palawa, their
 Elders, and their enduring connectivity to Uluru/Kata Tjuta.

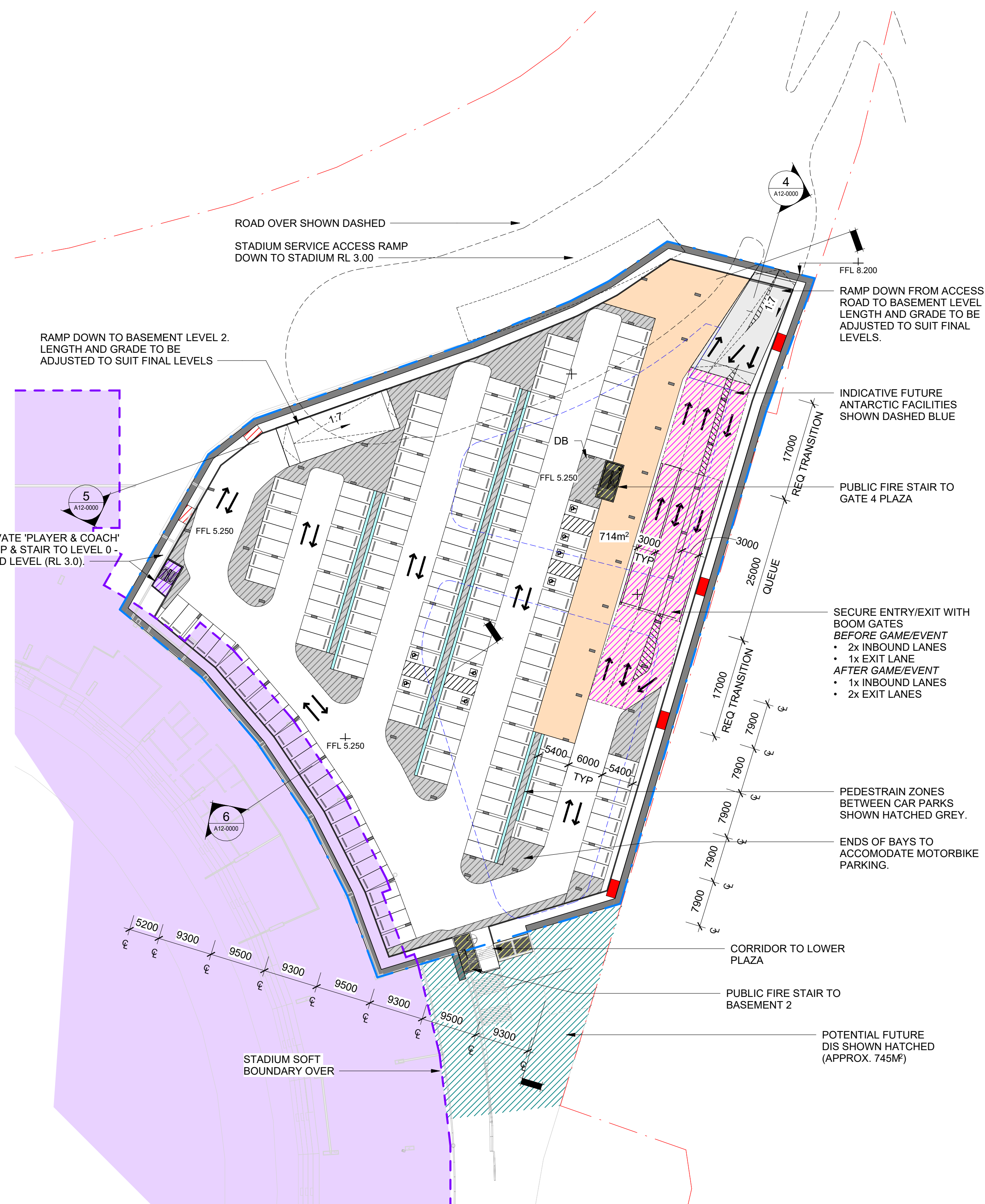
Drawing Title
GENERAL ARRANGEMENT NORTHERN
CAR PARK

Document Control Status:
Legislation Drawing Issue

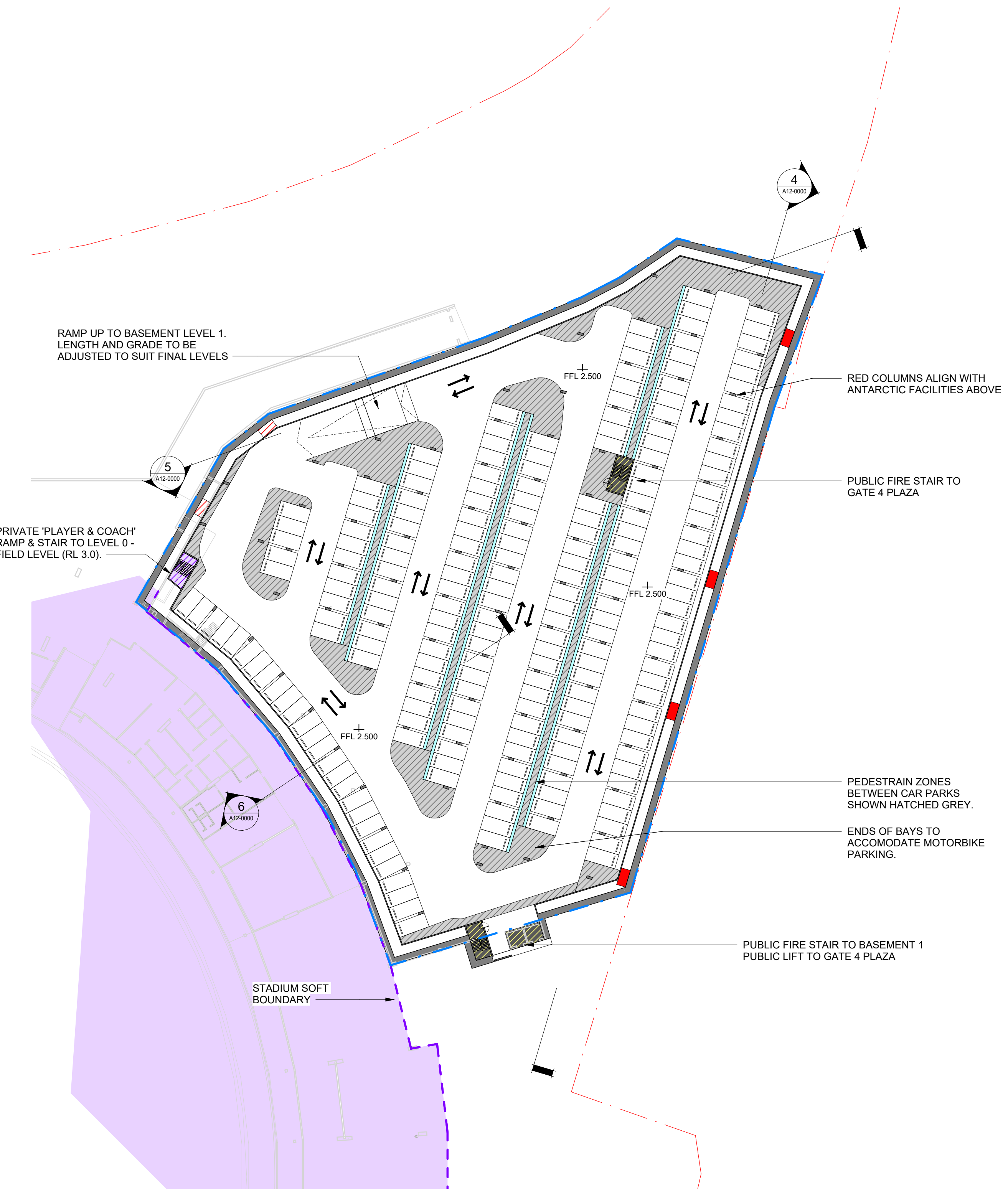
Co-ordinated:	MM	ARI
Project Designer:	AR/SH	Scale: As indicated @ A0
Project Director:	AR/SH	Revision Date: 08/05/25
Drawing Number:	MPMS-CXC-DR-01-A12-0000	Revision:



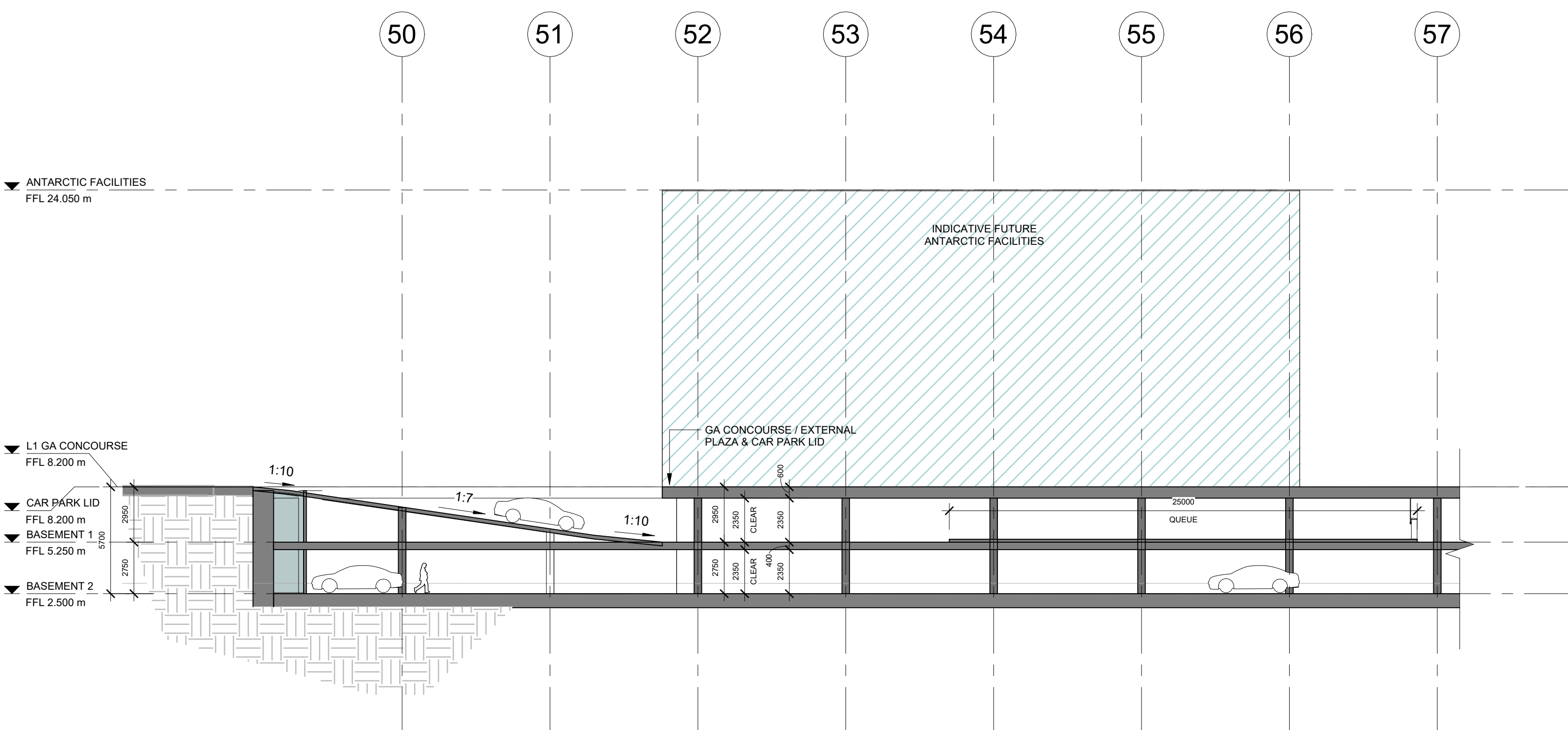
1 L1 GA CONCOURSE
SCALE 1 : 500



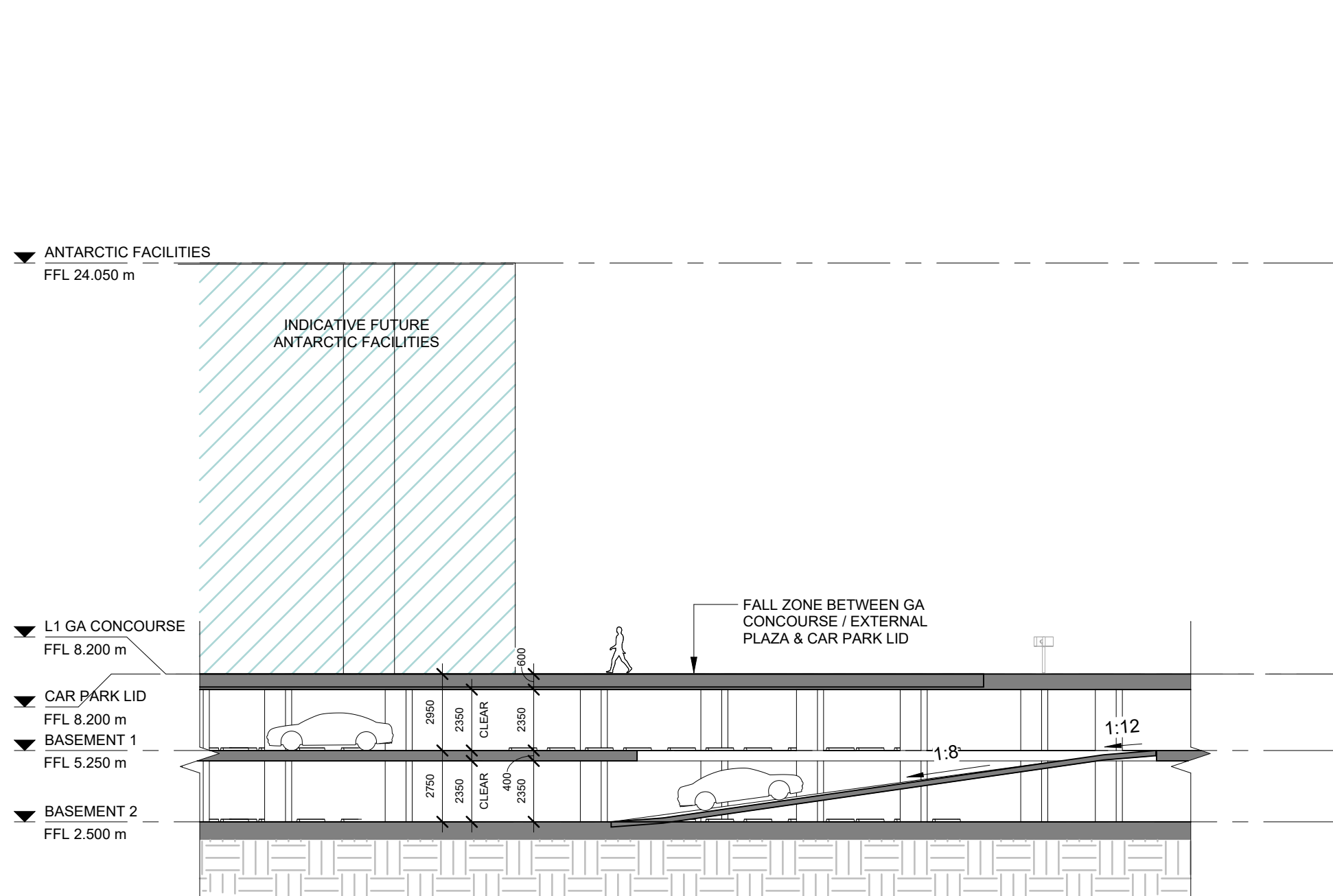
2 BASEMENT 1 - CAR PARK
SCALE 1 : 500



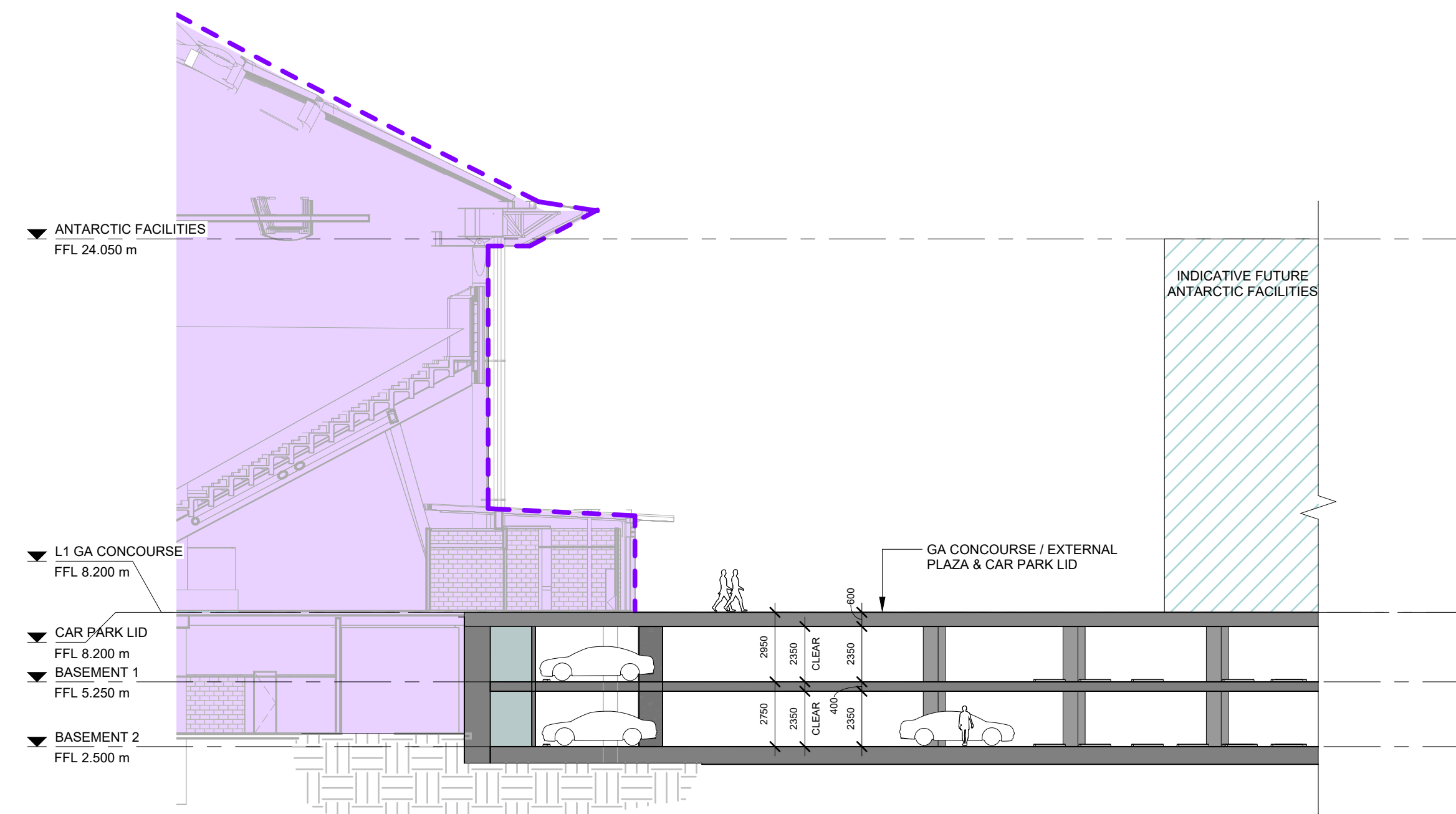
3 BASEMENT 2 - CAR PARK
SCALE 1 : 500



4 SECTION 1 - CAR PARK
SCALE 1 : 200



5 SECTION 2 - CAR PARK
SCALE 1 : 200



6 SECTION 3 - CAR PARK
SCALE 1 : 200