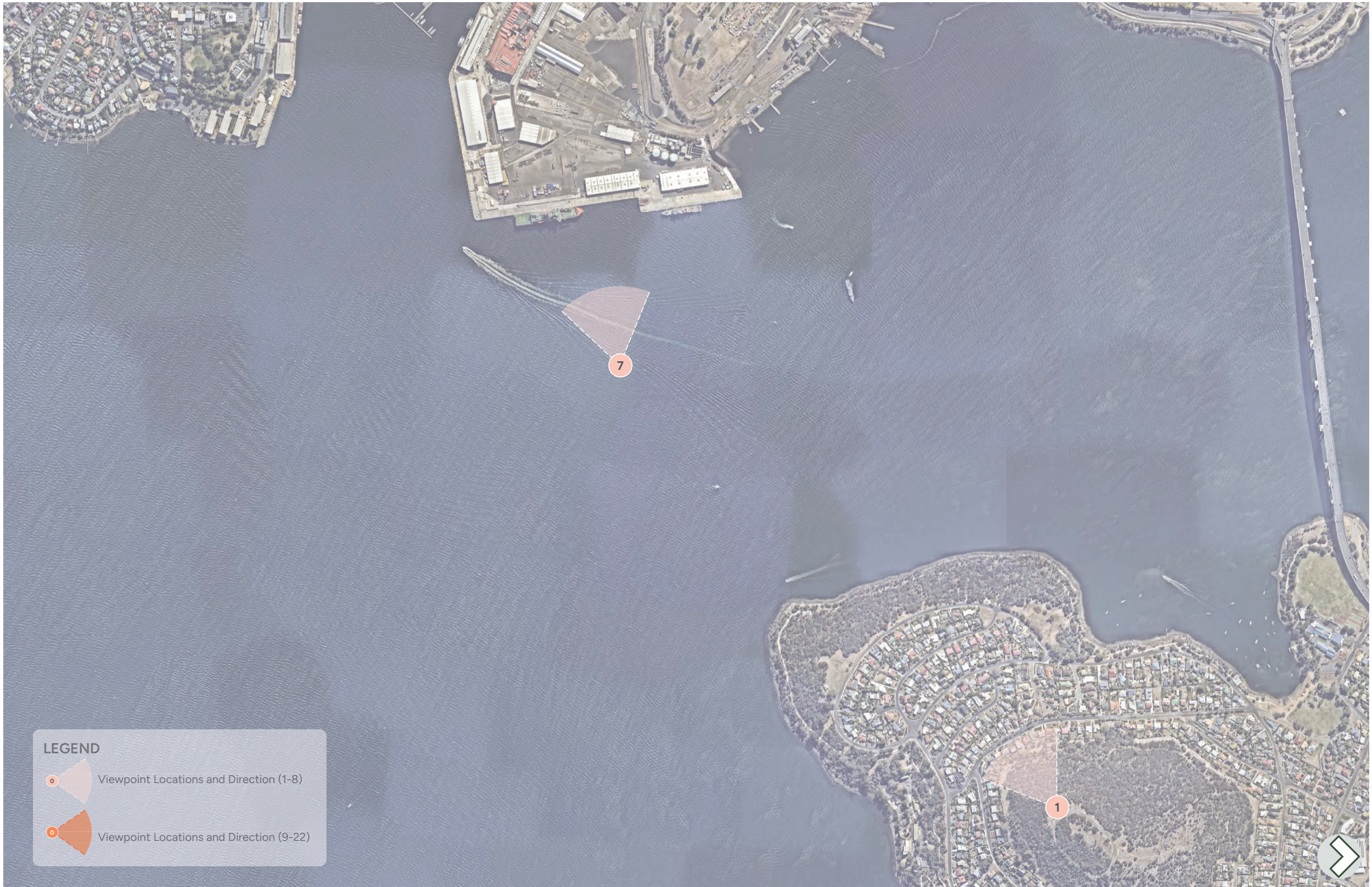


Consolidated Plan Set

Visual Impact SLR Consulting





LEGEND

Viewpoint Locations and Direction (1-8)

Viewpoint Locations and Direction (9-22)

VIEW POINT LOCATIONS

VP	LATITUDE (GDA2020Z55)	LONGITUDE (GDA2020Z55)	GROUNDLINE HEIGHT (m AHD)	HEIGHT AT EYE LEVEL (GL + 1.67m - AHD)	DATE & TIME OF PHOTO
VP1	-42.8698	147.3581	90.7806	92.4506	5/06/24 – 11.18am.
VP2	-42.8762	147.3339	20.81982	22.48982	5/06/24 – 12.17pm.
VP3	-42.878	147.3365	22.36145	24.03145	6/06/24 - 9.56am.
VP4	-42.8787	147.3327	3.976851	5.646851	6/06/24 – 10.22am.
VP5	-42.884	147.3287	17.80467	19.47467	6/06/24 – 10.38am.
VP6	-42.8859	147.3353	2.398601	4.068601	6/06/24 – 1.41pm.
VP7	-42.8806	147.3449	0.708745	2.378745	7/06/24 - 9.22am.
VP8	-42.8828	147.332	3.198446	4.868446	12/06/24 - 9.19am.

VIEW POINT LOCATIONS

VP	LATITUDE (GDA2020Z55)	LONGITUDE (GDA2020Z55)	GROUNDLINE HEIGHT (m AHD)	HEIGHT AT EYE LEVEL (GL + 1.67m - AHD)	DATE & TIME OF PHOTO
VP9	147.33196	-42.88466	2.147	3.817	13/01/2025 - 10:29am.
VP10	147.332169	-42.882717	2.777	4.447	12/01/2025 - 10:57am.
VP11	147.333624	-42.883845	2.324	3.994	13/01/2025 - 10:25am.
VP12	147.334267	-42.882312	2.204	3.874	12/01/2025 - 12:25pm.
VP13	147.33393	-42.882094	2.170	3.840	12/01/2025 - 12:29pm.
VP14	147.335027	-42.885889	2.381	4.051	12/01/2025 - 2:17pm.
VP15	147.334931	-42.882268	2.285	3.955	12/01/2025 - 12:44pm.
VP16	147.335384	-42.882011	2.423	4.093	12/01/2025 - 12:47pm.
VP17	147.338072	-42.881677	2.918	4.588	13/01/2025 - 10:48am
VP18	147.334731	-42.880489	3.200	4.870	13/01/2025 - 10:57am.
VP19	147.333764	-42.879844	3.001	4.671	13/01/2025 - 11:07am.
VP20	147.333238	-42.878772	3.942	5.612	12/01/2025 - 1:32pm.
VP21	147.334657	-42.879264	6.080	7.750	12/01/2025 - 1:44pm.
VP22	147.33345	-42.873733	34.517	36.187	13/01/2025 - 9:25am.

VIEW POINT DESCRIPTIONS - VIEWPOINTS 9-22

VP	Description of Viewpoint	Corresponding Image (and page) in Heritage Impact Assessment (where requested)
VP9	View northeast towards the Site from Franklin Wharf to adjacent Brooke Street Pier.	
VP10	View northeast toward the Site from the corner of Argyle and Davey Street. View encompasses Customs House and Constitution Dock in the foreground.	
VP11	View northeast toward the Site from Elizabeth Street Pier. View encompasses Constitution and Victoria Docks, MACq 01 Hotel, and heritage buildings along Hunter Street. (Requested by THC)	Figure 68 (page 145)
VP12	View northeast towards the Site across Victoria Dock (adjacent Mures Building), and including the MACq 01 Hotel, and heritage buildings along Hunter Street. (Requested by THC)	Figure 69 (page 145)
VP13	View east towards the MACq 01 Hotel across Victoria Dock. Heritage buildings along Hunter Street frame the edge of the dock area. (Requested by THC)	Figure 26 (page 62)
VP14	View north towards the Site from Princes Wharf, incorporating views of the MACq 01 Hotel across Sullivans Cove. (Requested by THC)	Figure 27 (page 62)
VP15	View northeast towards the Site across Victoria Dock and the Victoria Dock Bridge, with heritage buildings along Hunter Street in the foreground.	Figure 42 (page 91)
VP16	View northeast towards the Site from the Victoria Dock Bridge with heritage buildings along Hunter Street in the foreground. (Requested by THC)	Figure 70 (page 145)
VP17	View northwest along Evans Street from Tasmanian Ports Corporation building with the Site located to the east.	
VP18	View north toward the Hobart Gas Company building along Davey Street and from the corner of Davey Street and Evans Street. The Site is located to the northeast of the viewpoint. (Requested by THC)	Figure 47 (page 100)
VP19	View east toward the Site adjacent the Hobart Gas Company building at the intersection of Evans Street and Macquarie Street. (Requested by THC)	Figure 46 (page 100)
VP20	View east along Brooker Avenue towards the intersection with Davey Street and towards the Site. This viewpoint is representative of a major vehicular entry point toward Davey Street and Macquarie Point. (Requested by HCC)	Figure 56 (page 121)
VP21	View northeast towards the Site from the corner of Davey Street and Brooker Avenue in front of the Royal Engineers Building. (Requested by THC)	Figure 57 (page 121)
VP22	View south towards Sullivan's Cove along the Soldiers Memorial Avenue. The Hobart Gasworks Complex and the Bridge of Remembrance are visible in the middle ground. (Requested by THC)	Figure 59 (page 126)























MAC POINT **VIEW 2 BROOKER AVE** PROPOSED DEVELOPMENT WITH PLANTING















MAC POINT VIEW 8 DAVEY ARGYLE EXISTING VIEW



MAC POINT **VIEW 8 DAVEY ARGYLE** PROPOSED DEVELOPMENT



EXISTING VIEW



PROPOSED VIEW WITH STADIUM BUILT FORM



EXISTING VIEW



PROPOSED VIEW WITH STADIUM BUILT FORM



EXISTING VIEW



PROPOSED VIEW WITH STADIUM BUILT FORM



EXISTING VIEW



PROPOSED VIEW WITH STADIUM BUILT FORM



EXISTING VIEW



PROPOSED VIEW WITH STADIUM BUILT FORM



EXISTING VIEW



PROPOSED VIEW WITH STADIUM BUILT FORM



EXISTING VIEW



PROPOSED VIEW WITH STADIUM BUILT FORM



EXISTING VIEW



PROPOSED VIEW WITH STADIUM BUILT FORM



EXISTING VIEW



PROPOSED VIEW WITH STADIUM BUILT FORM



EXISTING VIEW



PROPOSED VIEW WITH STADIUM BUILT FORM



EXISTING VIEW



PROPOSED VIEW WITH STADIUM BUILT FORM



EXISTING VIEW



PROPOSED VIEW WITH STADIUM BUILT FORM



EXISTING VIEW



PROPOSED VIEW WITH STADIUM BUILT FORM



EXISTING VIEW



PROPOSED VIEW WITH STADIUM BUILT FORM