

SITE LEGEND

ROOFED STADIUM PITCH (19,500m²)

ROOFED STADIUM BUILDING FOOTPRINT (32,800m²)

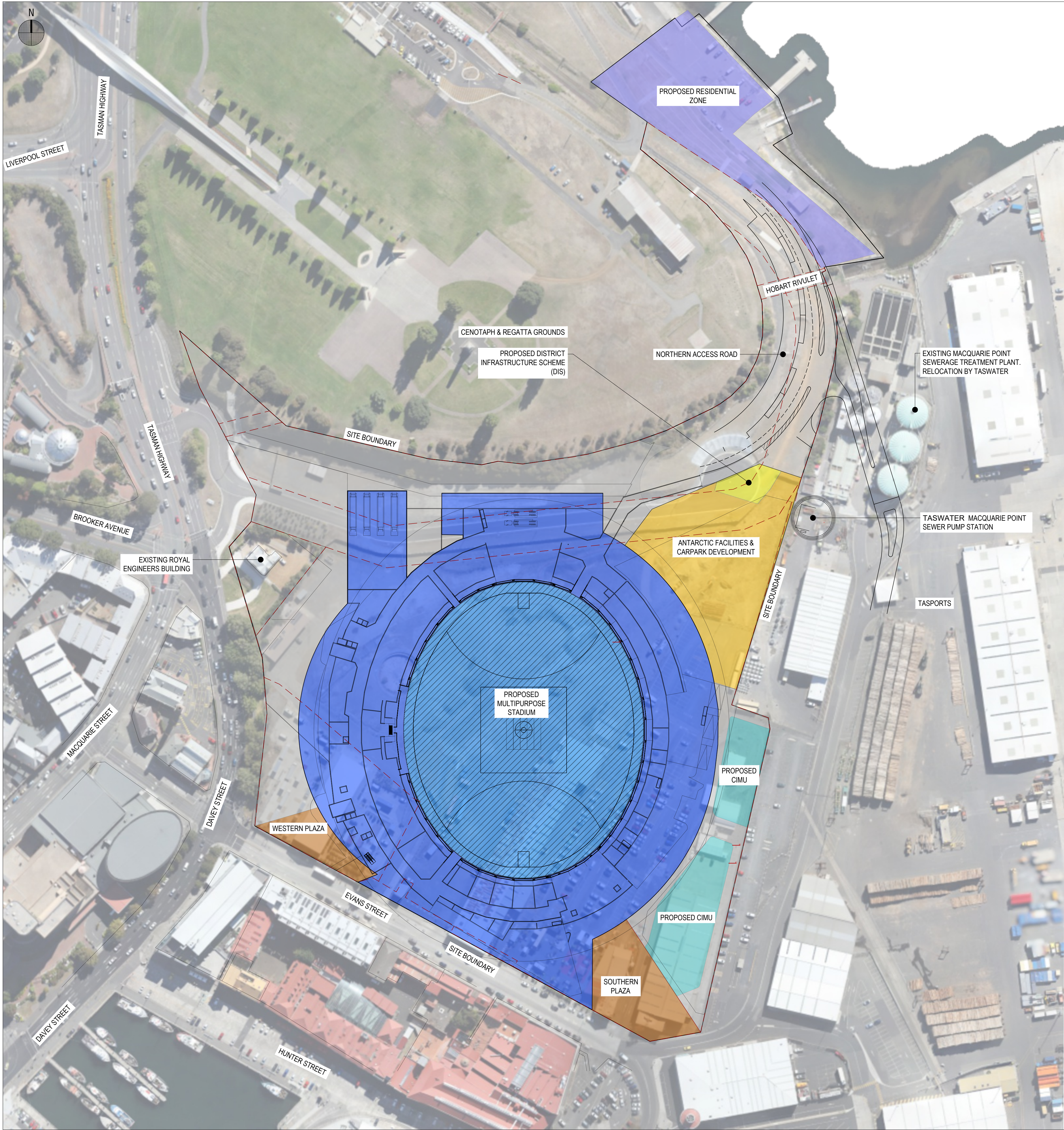
WESTERN PLAZA  
SOUTHERN PLAZA

ANTARCTIC FACILITIES ZONE AND CARPARK (6,800m²)

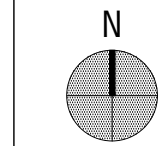
COMPLIMENTARY MIXED USE ZONE (4,000m²)

RESIDENTIAL ZONE (2,500m²)

PUBLIC OPEN SPACE (17,000m²)





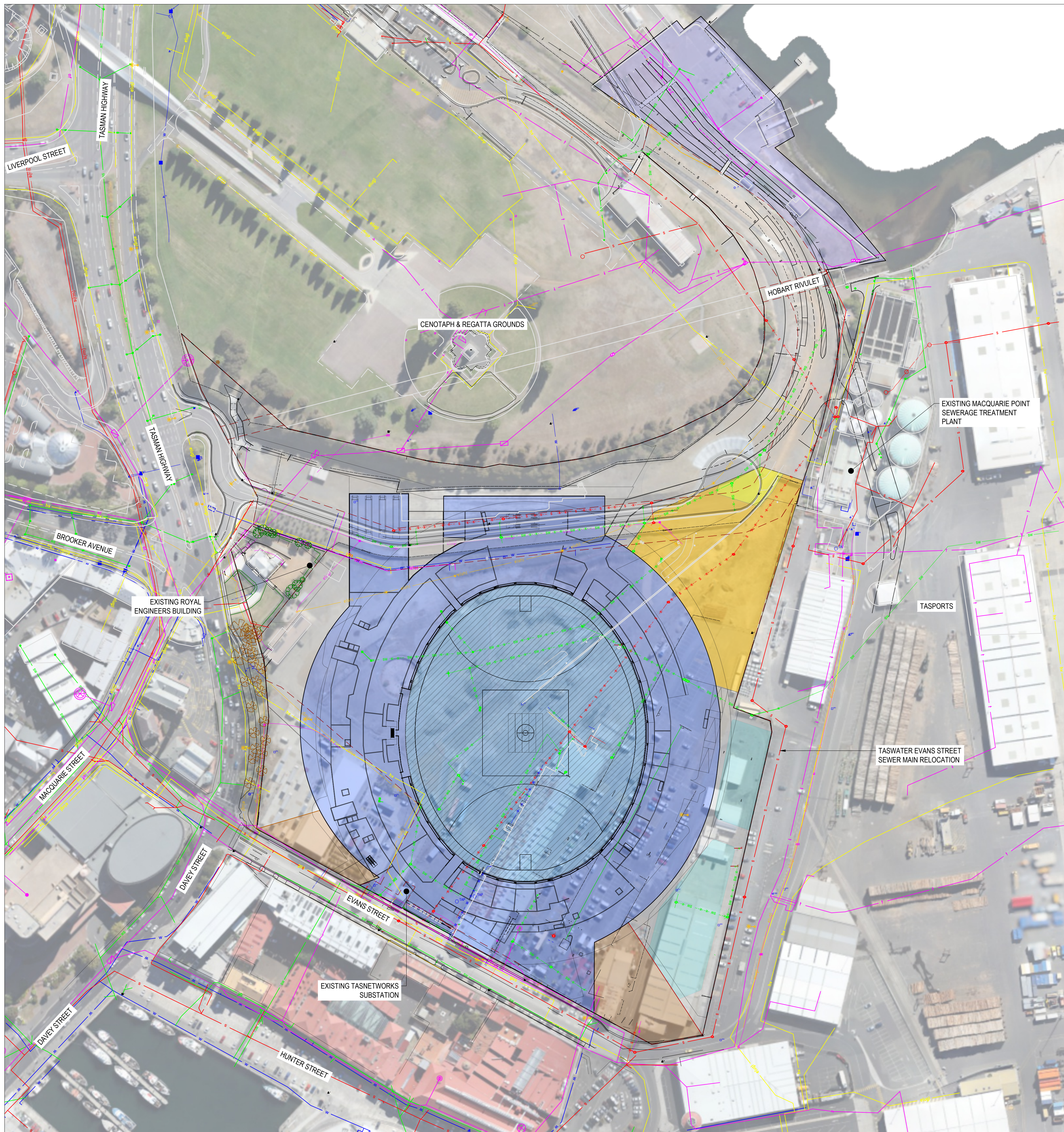


EXISTING SERVICES LEGEND

- EX. SEWER  
EX. SEWER RISING MAIN  
EX. SEWER I.O.  
EX. SEWER MAN HOLE  
EX. STORMWATER MAIN  
EX. STORMWATER GRATED PIT  
EX. STORMWATER MANHOLE  
DRAINAGE\_SW\_PIPE\_AG  
DRAINAGE\_SW\_PIPE\_UG  
E. WATER MAIN  
EX. STOP VALVE  
EX. FIRE HYDRANT  
EX. WATER HYDRANT  
EX. TAP  
EX. WATER METER  
EX. OPTIC FIBRE  
EXISTING COMMS DOUBLE PIT  
EX. COMMS PIT  
EX. TELSTRA  
EX. COMMS  
EX. COMMS JUNCTION  
EX. PARKING METER  
EX. UNDERGROUND ELECTRICAL  
EX. ELEC HV  
EX. ELEC LV  
EX. LIGHT POLE  
EX. OVERHEAD POWER  
EX. POWER POLE  
EX. GAS VALVE  
EX. GAS  
EX. FUEL  
EASEMENT  
EX. FENCE  
EXISTING ELECTRICAL SUBSTATION

REDUNDANT SERVICES LEGEND

- REDUNDANT SEWER  
REDUNDANT STORMWATER  
REDUNDANT WATER



SAFETY IN DESIGN REPORT PER WHS REGULATIONS

|   |     |
|---|-----|
| The following risks which are unique to this design have been identified:   | N/A |
| This report does not release contractors from their responsibilities under the Act to identify, report, mitigate and manage all aspects of risk and safety. |     |

|   |     |      |
|---|-----|------|
| Accepted (Discipline Head)  | CJM | Date |
| Accepted (Team Leader)  | JMB | Date |
| Approved (Principal)  | CCH | Date |
| This document must be signed "Approved" by JMG to authorize it for use. JMG accepts no liability whatsoever for unauthorised or unlicensed use. |     |      |

|   |             |            |
|---|-------------|------------|
| SCALES @ A1   | DESIGNED BY | DRAWN BY   |
| 1:1500  | CCH         | CEF        |
| DO NOT SCALE. Use only figure dimensions. Locations of structures, fittings, services etc. on this drawing are indicative only. CONTRACTOR to check locations & other project drawings for construction details. CONTRACTOR to take check all dimensions and exact locations of all items. JMG accepts no responsibility for dimensional discrepancies solely derived from this document. | PLOT DATE   | 24/07/2024 |



JOHNSTONE MCGEE & GANDY PTY LTD  
117 Harrington Street, Hobart TAS  
49-51 Elizabeth Street, Launceston TAS  
www.jmg.net.au info@jmg.net.au info@jmg.net.au

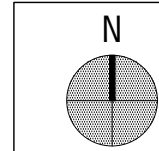
PROJECT  
MACQUARIE POINT SITE  
INFRASTRUCTURE STRATEGY

TITLE  
EXISTING SERVICES  
SITE PLAN

|              |                          |
|--------------|--------------------------|
| PROJECT NO.  | J230498CS                |
| DWG NO.      | C02                      |
| PLOT DETAILS | J230498CS - SERVICES.DWG |

|          |     |
|----------|-----|
| REVISION | DA1 |
|----------|-----|





EXISTING SERVICES LEGEND

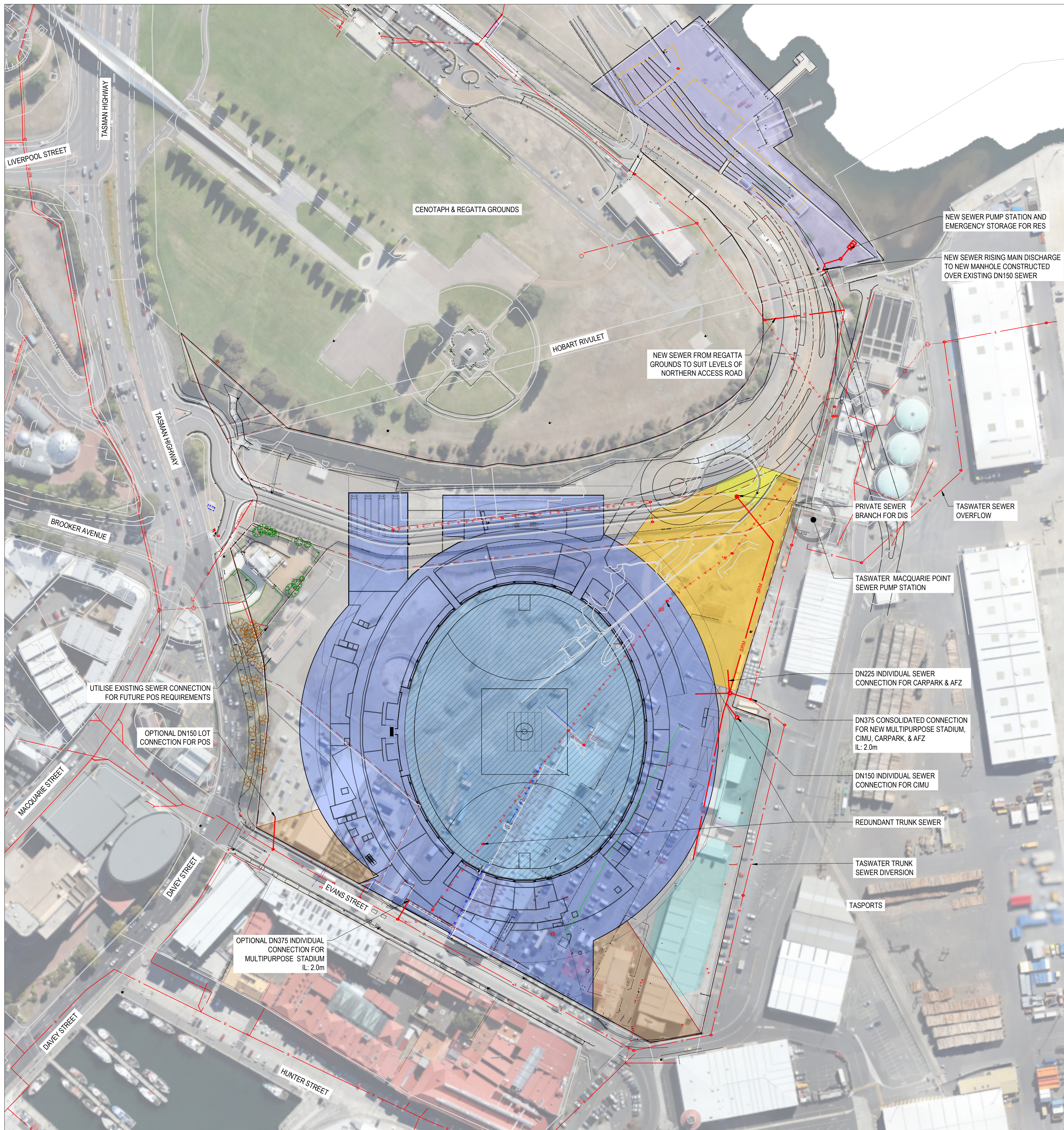
EX. SEWER  
EX. SEWER RISING MAIN  
EX. SEWER I.O  
EX. SEWER MAN HOLE

NEW SERVICES LEGEND

NEW SEWER  
NEW SEWER MANHOLE  
NEW SEWER PROPERTY CONNECTION

REDUNDANT SERVICES LEGEND

REDUNDANT SEWER



DA 124.07.2024 REVISED SUBMISSION  
DA 08.07.2024 ISSUE FOR PoSS SUBMISSION  
P2 02.07.2024 DRAFT PoSS SUBMISSION  
P1 13.12.2023 PRELIMINARY ISSUE  
REV | DATE | REMARK

Copyright © All rights reserved. This drawing and its intellectual content remains the intellectual property of JOHNSTONE MCGEE & GANDY PTY LTD (JMG).  
The recipient client is licensed to use this drawing for its commissioned purpose subject to authorisation per note above. Unauthorised use is prohibited. Unlicensed parties may not copy, reproduce or retransmit or amend this document or any part of this document without JMG's prior written permission. Amendment of this document is prohibited by any party other than JMG. JMG reserve the right to revoke the licence for use of this document.

SAFETY IN DESIGN REPORT PER WHS REGULATIONS

|   |    |
|---|----|
| The following risks which are unique to this design have been identified:   | NL |
| This report does not release contractors from their responsibilities under the Act to identify, report, mitigate and manage all aspects of risk and safety. |    |

|  |     |      |
|--|-----|------|
| Accepted (Discipline Head)   | CJM | Date |
| Accepted (Team Leader)   | JMB | Date |
| Approved (Principal)   | CCH | Date |
| This document must be signed 'Approved' by JMG to authorise it for use. JMG accept no liability whatsoever for unauthorised or unlicensed use. |     |      |

|  |             |            |
|--|-------------|------------|
| SCALES @ A1  | DESIGNED BY | DRAWN BY   |
| 1:1500   | CCH         | CEF        |
| DO NOT SCALE. Use only figure dimensions. Locations of structure, fittings, services etc. on this drawing are indicative only. CONTRACTOR to check locations & other project drawings for construction details. Structure, Manhole, Fittings, services etc. CONTRACTOR to take check of dimensions and exact locations of all items. JMG accept no responsibility for dimensional discrepancy unless it is clearly shown from the drawing. | PLOT DATE   | 24/07/2024 |



JOHNSTONE MCGEE & GANDY PTY LTD  
117 Harrington Street, Hobart TAS  
49-51 Elizabeth Street, Launceston TAS  
www.jmg.net.au info@jmg.net.au info@jmg.net.au

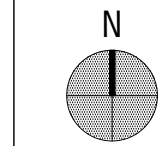
PROJECT  
MACQUARIE POINT SITE  
INFRASTRUCTURE STRATEGY

TITLE  
EXISTING & PROPOSED SEWER

PROJECT NO. 230498CS  
DWG NO. C03  
PLOT DETAILS J230498CS - SERVICES.DWG

REVISION  
DA1





EXISTING SERVICES LEGEND

SW

AG

UG

SW

AG

UG

EX. STORMWATER MAIN

EX. STORMWATER GRATED\_PIT

EX. STORMWATER MANHOLE

DRAINAGE\_SW\_PIPE\_AG

DRAINAGE\_SW\_PIPE\_UG

EASEMENT

NEW SERVICES LEGEND

SW

SW

SW

SW

NEW STORMWATER

NEW STORMWATER MANHOLE

NEW STORMWATER PROPERTY CONNECTION

REDUNDANT SERVICES LEGEND

SW

SW

SW

SW

REDUNDANT STORMWATER

CATCHMENT LEGEND

CATCHMENT 1

CATCHMENT 2

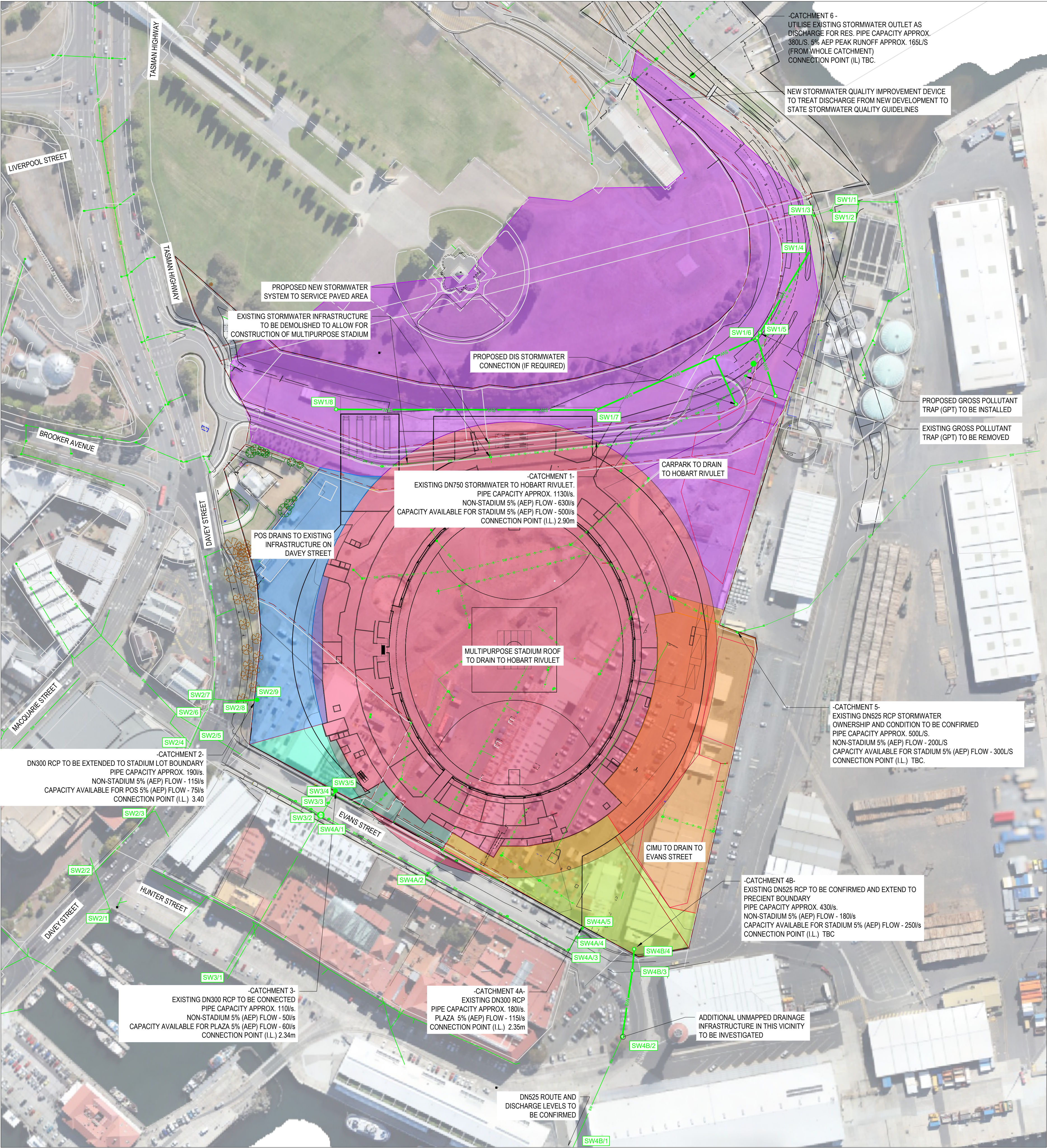
CATCHMENT 3

CATCHMENT 4

CATCHMENT 5

CATCHMENT 6

STADIUM



SAFETY IN DESIGN REPORT PER WHS REGULATIONS

|   |    |
|---|----|
| The following risks which are visible in this design have been identified:  | NL |
| This report does not release contractors from their responsibilities under the Act to identify, report, mitigate and manage all aspects of risk and safety. |    |

|   |     |      |
|---|-----|------|
| Accepted (Discipline Head)  | CJM | Date |
| Accepted (Team Leader)  | JMB | Date |
| Approved (Principal)  | CCH | Date |
| This document must be signed 'Approved' by JMG to authorise it for use. JMG accepts no liability whatsoever for unauthorised or unlicensed use. |     |      |

|   |             |            |
|---|-------------|------------|
| SCALES @ A1   | DESIGNED BY | DRAWN BY   |
| 1:1500  | CCH         | CEF        |
|   | PLOT DATE   | 24/07/2024 |
| DO NOT SCALE. Use only figure dimensions. Locations of structures, fittings, services etc. on this drawing are indicative only. CONTRACTOR to check locations & other project drawings for confirmation before construction. JMG accepts no responsibility for dimensional deviation unless it is explicitly shown on this drawing. |             |            |



JOHNSTONE MCGEE & GANDY PTY LTD  
117 Harrington Street, Hobart TAS  
49-51 Elizabeth Street, Launceston TAS  
www.jmg.net.au info@jmg.net.au info@jmg.net.au

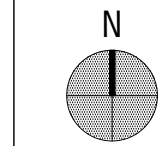
PROJECT  
MACQUARIE POINT SITE  
INFRASTRUCTURE STRATEGY

TITLE  
EXISTING & PROPOSED STORMWATER

|              |                          |
|--------------|--------------------------|
| PROJECT NO.  | 230498CS                 |
| DWG NO.      | C04                      |
| PLOT DETAILS | J230498CS - SERVICES.DWG |

|          |     |
|----------|-----|
| REVISION | DA1 |
|----------|-----|





EXISTING SERVICES LEGEND

E. WATER MAIN

EX. STOP VALVE

EX. FIRE HYDRANT

EX. WATER HYDRANT

EX. TAP

EX. WATER METER

NEW SERVICES LEGEND

NEW FIRE SERVICES (PRIVATE)

NEW WATER (PRIVATE)

NEW WATER PROPERTY CONNECTION

NEW WATER STOP VALVE

REDUNDANT SERVICES LEGEND

REDUNDANT WATER

DA124.07.2024 REVISED SUBMISSION

DA08.07.2024 ISSUE FOR PoSS SUBMISSION

P2.02.07.2024 DRAFT PoSS SUBMISSION

P1.13.12.2023 PRELIMINARY ISSUE

REV | DATE | REMARK

Copyright © All rights reserved. This drawing and its intellectual content remains the intellectual property of JOHNSTONE MCGEE & GANDY PTY LTD (JMG).

The recipient client is licensed to use this drawing for its commissioned purpose subject to authorisation per note above. Unlicensed use is prohibited. Unlicensed parties may not copy, reproduce or transmit or amend this document or any part of this document without JMG's prior written permission. Amendment of this document is prohibited by any party other than JMG. JMG reserve the right to revoke the licence for use of this document.

SAFETY IN DESIGN REPORT PER WHS REGULATIONS

The following risks which are unique to this design have been identified:

NL

This report does not release contractors from their responsibilities under the Act to identify, report, mitigate and manage all aspects of risks and safety.

|                            |     |      |
|----------------------------|-----|------|
| Accepted (Discipline Head) | CJM | Date |
| Accepted (Team Leader)     | JMB | Date |
| Approved (Principal)       | CCH | Date |

This document must be signed 'Approved' by JMG to authorize it for use. JMG accept no liability whatsoever for unauthorised or unlicensed use.

|             |             |            |
|-------------|-------------|------------|
| SCALES @ A1 | DESIGNED BY | DRAWN BY   |
| 1:1500      | CCH         | CEF        |
|             | PLOT DATE   | 24/07/2024 |

DO NOT SCALE. Use only figure dimensions. Locations of structures, fittings, services etc. on this drawing are indicative only. CONTRACTOR to check location & other project drawings for construction sequence, structure, levels, materials, fittings, services etc. CONTRACTOR to take check all dimensions and exact locations of all items. JMG accept no responsibility for dimensional discrepancy unless it is clearly derived from the document.

JMG

JOHNSTONE MCGEE & GANDY PTY LTD  
117 Harrington Street, Hobart TAS  
49-51 Elizabeth Street, Launceston TAS  
www.jmg.net.au info@jmg.net.au info@lmg.net.au

(03) 6231 2555  
(03) 6334 5548

PROJECT

MACQUARIE POINT SITE  
INFRASTRUCTURE STRATEGY

TITLE

EXISTING & PROPOSED WATER  
AND FIRE SERVICE LAYOUT

|              |                          |
|--------------|--------------------------|
| PROJECT NO.  | J230498CS                |
| DWG NO.      | C05                      |
| REVISION     | DA1                      |
| PLOT DETAILS | J230498CS - SERVICES.DWG |

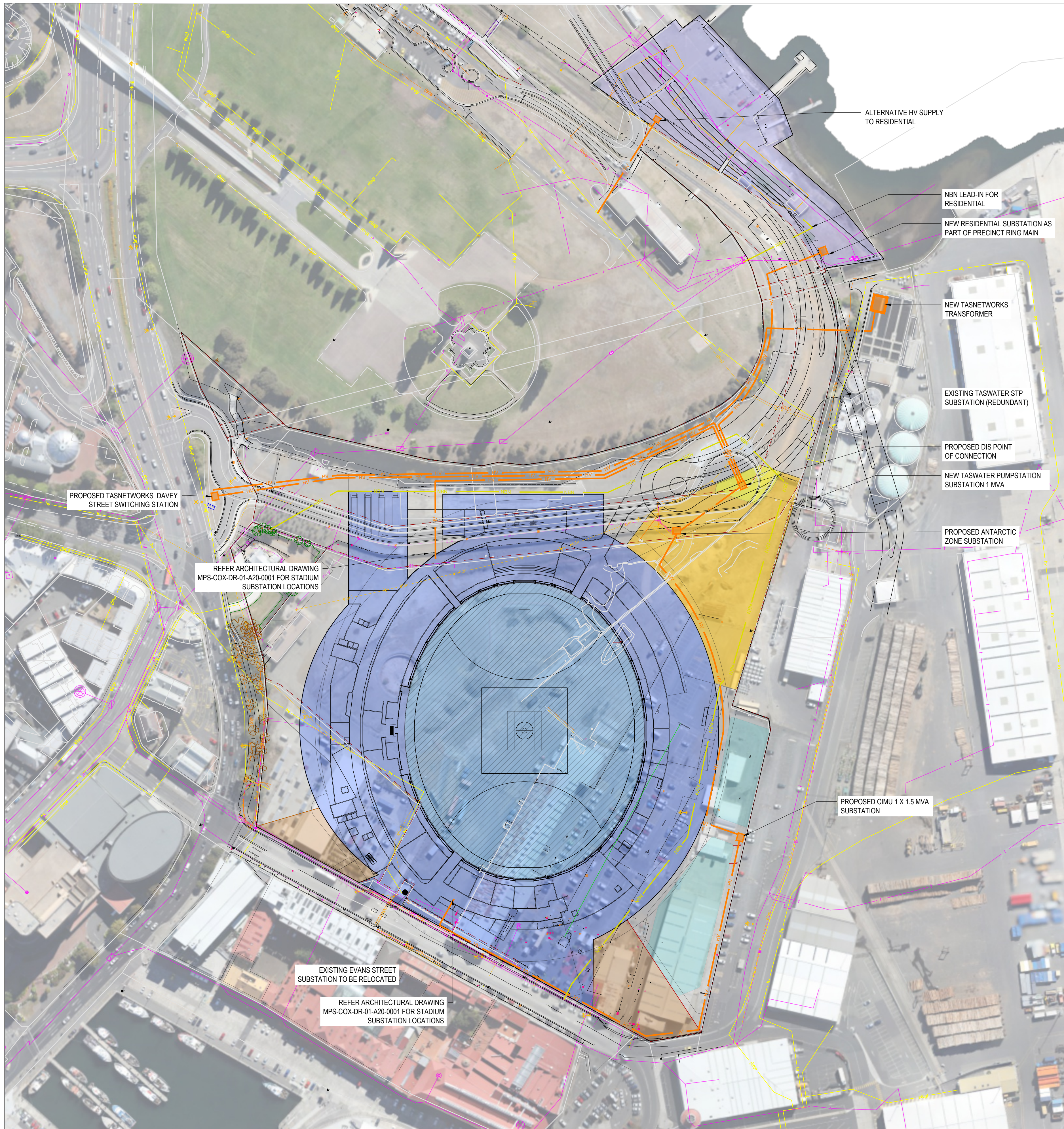


### EXISTING SERVICES LEGEND

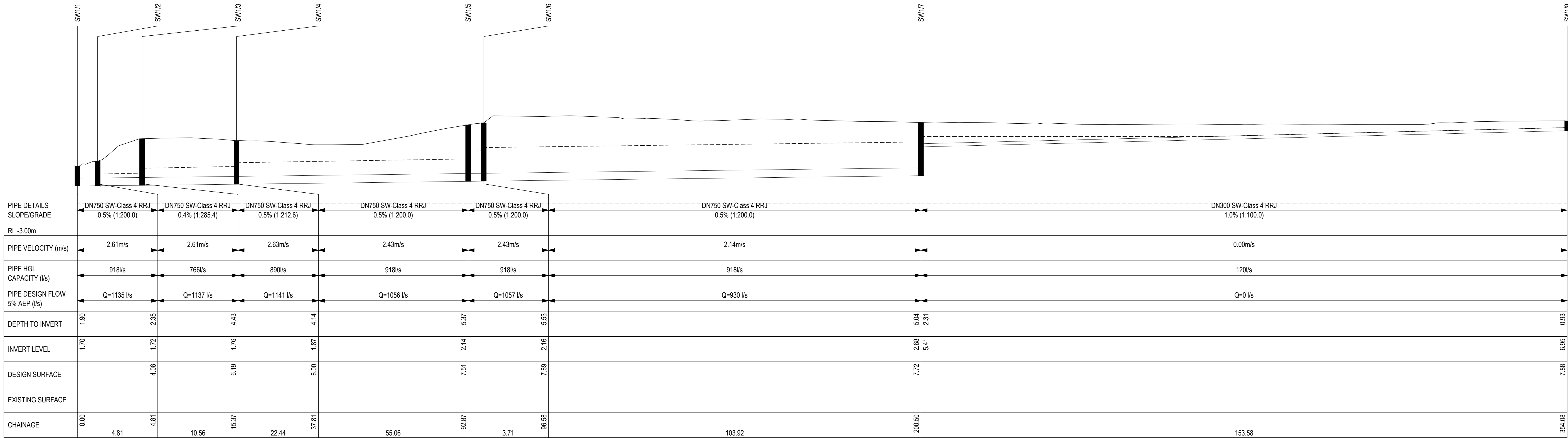
- EX. COMMS JUNCTION
- EX. PARKING METER
- EX. UNDERGROUND ELECTRICAL
- EX. ELEC HV
- EX. ELEC LV
- EX. LIGHT POLE
- EX. OVERHEAD POWER
- EX. POWER POLE
- EX. GAS VALVE
- EX. GAS
- EX. FUEL
- EASEMENT
- EXISTING ELECTRICAL SUBSTATION

### NEW SERVICES LEGEND

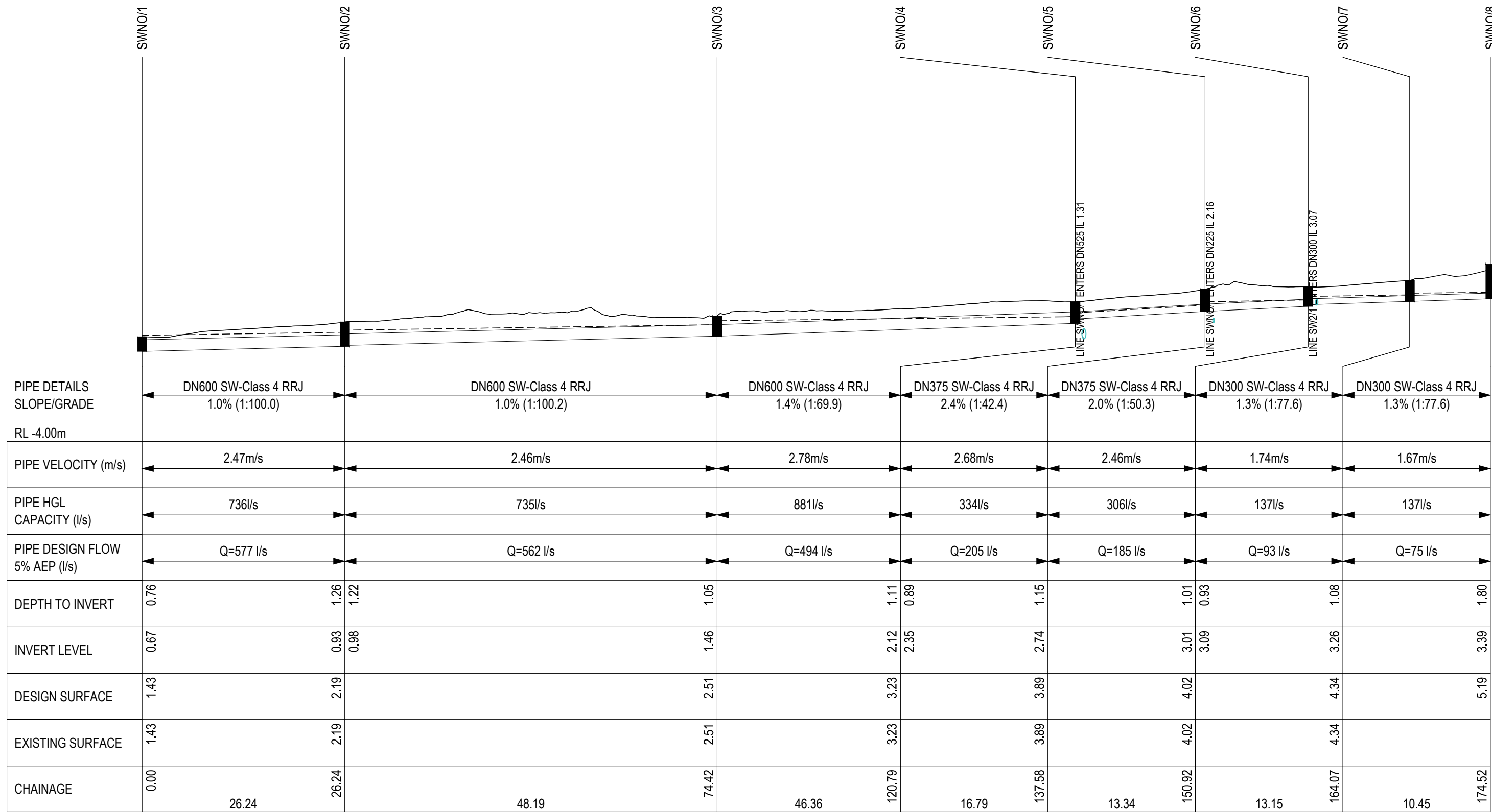
- NEW UNDERGROUND ELECTRICAL
- NEW ELECTRICAL SUBSTATION
- NEW UNDERGROUND ELECTRICAL PROPERTY CONNECTION
- NEW UNDERGROUND NBN



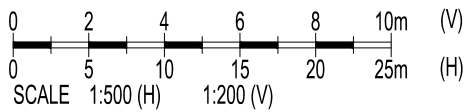




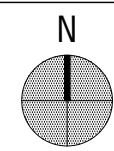
CATCHMENT 1  
STORMWATER PROFILE  
SCALES: 1:500(H) 1:200(V)



CATCHMENT 2  
STORMWATER PROFILE  
SCALES: 1:500(H) 1:200(V)







EXISTING SERVICES LEGEND

EX. STORMWATER MAIN  
EX. STORMWATER GRATED\_PIT  
EX. STORMWATER MANHOLE  
DRAINAGE\_SW\_PIPE\_AG  
DRAINAGE\_SW\_PIPE\_UG  
EASEMENT

NEW SERVICES LEGEND

NEW STORMWATER  
NEW STORMWATER MANHOLE  
NEW STORMWATER PROPERTY CONNECTION

REDUNDANT SERVICES LEGEND

REDUNDANT STORMWATER

CATCHMENT/ OVERLAND FLOW LEGEND

CATCHMENT 1 - OVERLAND FLOW TO THE EAST  
CATCHMENT 2 - OVERLAND FLOW TO DAVEY STREET  
CATCHMENT 3 - OVERLAND FLOW TO DAVEY STREET  
CATCHMENT 4 - OVERLAND FLOW TO HUNTER STREET  
CATCHMENT 5 - OVERLAND FLOW TO HUNTER STREET  
CATCHMENT 6 - OVERLAND FLOW TO NORTH EAST  
STADIUM  
OVERLAND FLOW DIRECTION

